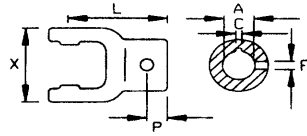



### Round Bore Yoke with Keyway & Tapped Hole



Series		A	C	F	X	P	L	Part No.
<b>Series #1</b>	22 X 54	20	6	M 8	65	15	79	8-10151
		25	8	M10				8-10152
		30	8	M10				8-10153
		3/4"	3/16"	3/8" 16UNC				8-10157
		1"	1/4"	3/8" 16UNC				8-10158
		1-1/4"	1/4"	3/8" 16UNC				8-10159/N
		1-1/4"	5/16"	3/8" 16UNC				8-10159
<b>Series #2</b>	23.8 X 61.3	20	6	M 8	71	20	82	8-10251
		25	8	M10				8-10252
		30	8	M10				8-10253
		3/4"	3/16"	3/8" 16UNC				8-10257
		1"	1/4"	3/8" 16UNC				8-10258
		1-1/4"	5/16"	3/8" 16UNC				8-10259
<b>Series #3</b>	27 X 70	25	8	M10	80	20	85	8-10352
		30	8	M10				8-10353
		35	10	M12				8-10354
		1"	1/4"	3/8" 16UNC				8-10358
		1-1/4"	1/4"	3/8" 16UNC				8-10359/N
		1-1/4"	5/16"	3/8" 16UNC				8-10359
		1-3/8"	5/16"	3/8" 16UNC				8-10350
<b>Series #4</b>	27 X 74.6	25	8	M10	85	20	98	8-10452
		30	8	M12				8-10453
		35	10	3/8" 16UNC				8-10454
		1"	1/4"	3/8" 16UNC				8-10458
		1-1/4"	5/16"	3/8" 16UNC				8-10459
		1-3/8"	5/16"	3/8" 16UNC				8-10450
<b>Series #5</b>	30.2 X 80	30	8	M10	89	20	96	8-10553
		35	10	M12				8-10554
		40	12	M12				8-10555
		1-1/4"	1/4"	3/8" 16UNC				8-10559/N
		1-1/4"	5/16"	3/8" 16UNC				8-10559
		1-3/8"	5/16"	3/8" 16UNC				8-10550
<b>Series #6</b>	30.2 X 92	30	8	M10	106	20	105	8-10653
		35	10	M12				8-10654
		40	12	M12				8-10655
		45	14	M14				8-10656
		1-1/4"	1/4"	3/8" 16UNC				8-10659/N
		1-1/4"	5/16"	3/8" 16UNC				8-10659
		1-3/8"	5/16"	3/8" 16UNC				8-10650
1-3/4"	3/8"	3/8" 16UNC	8-1065A					
<b>Series #7 OLD STYLE</b>	30.2 X 106.5	35	10	M12	117	25	120	8-11154
		40	12	M12				8-11155
		45	14	M14				8-11156
<b>Series #7</b>	35 x 94	35	10	M12	106	25	105	8-10754
		40	12	M12				8-10755
		45	14	M14				8-10756
		1-3/8"	5/16"	3/8" 16UNC				8-10750
<b>Series #8</b>	35 x 106.5	35	10	M12	117	25	120	8-10854
		40	12	M12				8-10855
		45	14	M14				8-10856
		1-3/8"	5/16"	3/8" 16UNC				8-10850
		1-1/2"	5/16"	3/8" 16UNC				8-1085F
		1-3/4"	3/8"	3/8" 16UNC				8-1085A
<b>Series #9</b>	41 x 108	40	12	M12	121	25	130	8-10955
		45	14	M14				8-10956
<b>Series #10</b>	41 x 118	40	12	M12	131	25	136	8-11055
		45	14	M14				8-11056