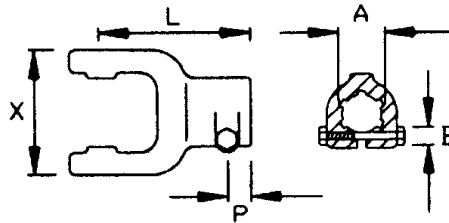


### Splined Bore Yoke with Interfering Clamp Bolt



Series		A	B		X	P	L	Part No.
<b>Series #1</b>	22 X 54	1-1/8"-6	M12		65	16	92	8-10131
		1-3/8"-6	M12	8-10130				
		1-3/8"-21	M12	8-10132				
		21x25x6	M12	8-10134				
<b>Series #2</b>	23.8 X 61.3	1-1/8"-6	M12		71	18	97	8-10231
		1-3/8"-6	M12	8-10230				
		1-3/8"-21	M12	8-10232				
<b>Series #3</b>	27 X 70	1-1/8"-6	M12		80	18	102	8-10331
		1-3/8"-6	M12	8-10330				
		1-3/8"-21	M12	8-10332				
<b>Series #4</b>	27 X 74.6	1-1/8"-6	M12		85	18	109	8-10431
		1-3/8"-6	M12	8-10430				
		1-3/8"-21	M12	8-10432				
<b>Series #5</b>	30.2 X 80	1-3/8"-6	M12		89	20	112	8-10530
		1-3/8"-21	M12	8-10532				
		1-3/4"-6	M16	8-10533				
		1-3/4"-20	M16	8-10537				
<b>Series #6</b>	30.2 X 92	1-3/8"-6	M12		106	20	122	8-10630
		1-3/8"-21	M12	8-10632				
		1-3/4"-6	M16	8-10633				
		1-3/4"-20	M16	8-10637				
<b>Series #7 OLD STYLE</b>	30.2 X 106.5	1-3/8"-6	M12		117	20	125	8-11130
		1-3/8"-21	M12	8-11132				
		1-3/4"-6	M16	8-11133				
		1-3/4"-20	M16	8-11137				
<b>Series #7</b>	35 x 94	1-3/8"-6	M12		106	20	122	8-10730
		1-3/8"-21	M12	8-10732				
		1-3/4"-6	M16	8-10733				
		1-3/4"-20	M16	8-10737				
<b>Series #8</b>	35 x 106.5	1-3/8"-6	M12		117	20	125	8-10830
		1-3/8"-21	M12	8-10832				
		1-3/4"-6	M16	8-10833				
		1-3/4"-20	M16	8-10837				
<b>Series #9</b>	41 x 108	1-3/8"-6	M12		121	20	126	8-10930
		1-3/8"-21	M12	8-10932				
		1-3/4"-6	M16	8-10933				
		1-3/4"-20	M16	8-10937				
<b>Series #10</b>	41 x 118	1-3/8"-6	M12		131	20	140	8-11030
		1-3/8"-21	M12	8-11032				
		1-3/4"-6	M16	8-11033				
		1-3/4"-20	M16	8-11037				