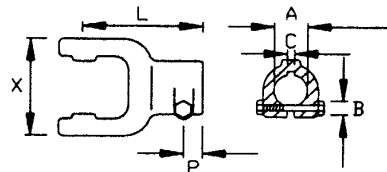



Round Bore Yoke with Keyway & Interfering Bolt



Shaft Size		A	C	B	X	P	L	Part No.
2100	22 X 54.8	20	6	M12	65	16	92	8-010171
		25	8	M12				8-010172
		30	8	M12				8-010173
		1-1/4"	1/4"	M12				8-010179/N
2200	23.8 X 61.3	20	6	M12	71	18	97	8-010271
		25	8	M12				8-010272
		30	8	M12				8-010273
		1-1/8"	1/4"	M12				8-01027D
		1-1/4"	1/4"	M12				8-010279/N
W1	27 X 70	25	8	M12	80	18	102	8-10372
		30	8	M12				8-10373
		35	10	M12				8-10374
		1"	1/4"	M12				8-10378
		1-1/4"	5/16"	M12				8-10379
		1-3/8"	5/16"	M12				8-10370
2300	27 X 74.6	25	8	M12	85	18	109	8-010472
		30	8	M12				8-010473
		35	10	M12				8-010474
		1-1/4"	1/4"	M12				8-010479/N
		1-3/8"	5/16"	M12				8-010470
2400	32 X 76	30	8	M12	89	20	112	8-010573
		35	10	M12				8-010574
		40	12	M12				8-010575
		1-1/4"	5/16"	M12				8-010579
		1-3/8"	5/16"	M12				8-010570
		1-1/2"	3/8"	M12				8-01057F
W11	34 X 90	30	8	M12	89	20	112	8-015673
		35	10	M12				8-015674
W220	30.2 X 92	30	8	M12	106	20	122	8-10673
		35	10	M12				8-10674
		40	12	M12				8-10675
		45	14	M12				8-10676
		1-1/4"	5/16"	M12				8-10679
		1-3/8"	5/16"	M12				8-10670
		1-3/4"	3/8"	M16				8-1067A
2500	36 X 89	30	8	M12	106	20	122	8-016773
		35	10	M12				8-016774
		40	12	M12				8-016775
		45	14	M16				8-016776
		1-3/8"	3/8"	M12				8-016770/N
		1-3/4"	3/8"	M16				8-01677A
2600	42 X 104	40	12	M12	121	20	126	8-010975
		45	14	M16				8-010976
		1-1/2"	3/8"	M16				8-01097F/C
		1-3/4"	1/2"	M16				8-01097A/N