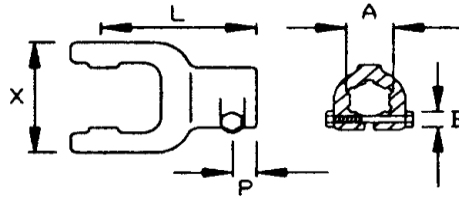



### Splined Bore Yoke with Non-interfering Clampbolt



Shaft Size		A	B		X	P	L	Part No.
2100	22 X 54.8	1-1/8"-6	M12		65	16	92	8-010141
		1-3/8"-6	M12					8-010140
		1-3/8"-21	M12					8-010142
2200	23.8 X 61.3	1-1/8"-6	M12		71	18	97	8-010241
		1-3/8"-6	M12					8-010240
		1-3/8"-21	M12					8-010242
W1	27 X 70	1-1/8"-6	M12		80	18	102	8-10341
		1-3/8"-6	M12					8-10340
		1-3/8"-21	M12					8-10342
2300	27 X 74.6	1-1/8"-6	M12		85	18	109	8-010441
		1-3/8"-6	M12					8-010440
		1-3/8"-21	M12					8-010442
2400	32 X 76	1-3/8"-6	M12		89	20	112	8-010540
		1-3/8"-21	M12					8-010542
		1-3/4"-6	M12					8-010543
		1-3/4"-20	M12					8-010547
W11	34 X 90	1-3/8"-6	M12		89	20	112	8-015640
		1-3/8"-21	M12					8-015642
		1-3/4"-6	M12					8-015643
		1-3/4"-20	M12					8-015647
W220	30.2 X 92	1-3/8"-6	M12		106	20	122	8-10640
		1-3/8"-21	M12					8-10642
		1-3/4"-6	M12					8-10643
		1-3/4"-20	M12					8-10647
2500	36 X 89	1-3/8"-6	M12		106	20	122	8-016740
		1-3/8"-21	M12					8-016742
		1-3/4"-6	M12					8-016743
		1-3/4"-20	M12					8-016747
2600	42 X 104	1-3/8"-6	M12		121	20	126	8-010940
		1-3/8"-21	M12					8-010942
		1-3/4"-6	M12					8-010943
		1-3/4"-20	M12					8-010947