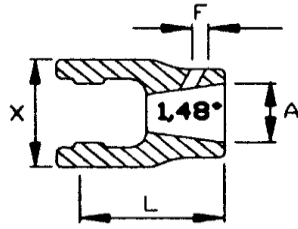

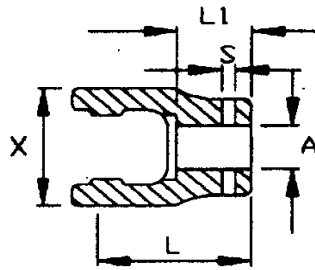



### Taper Yoke with Tapped Hole



Shaft Size		A	F	X	L	Part No.
Series 2	23.8 X 61.3	25.10 - 1.48°	M10	71	82	8-102132
		30.24 - 1.48°	M10			8-102133

### Shear Yoke with Counter Bore



Shaft Size		A	X	L	S	L1	Part No.
Series 4	27 X 74.6	1-3/8"	85	98	1/2"	41	8-4018
Series 5	32 X 76	1-3/8"	89	96	1/2"		8-5018